

**A PROPOSED REVISION OF THE
MASTER PLAN FOR COAL ASH
USES IN ISRAEL**

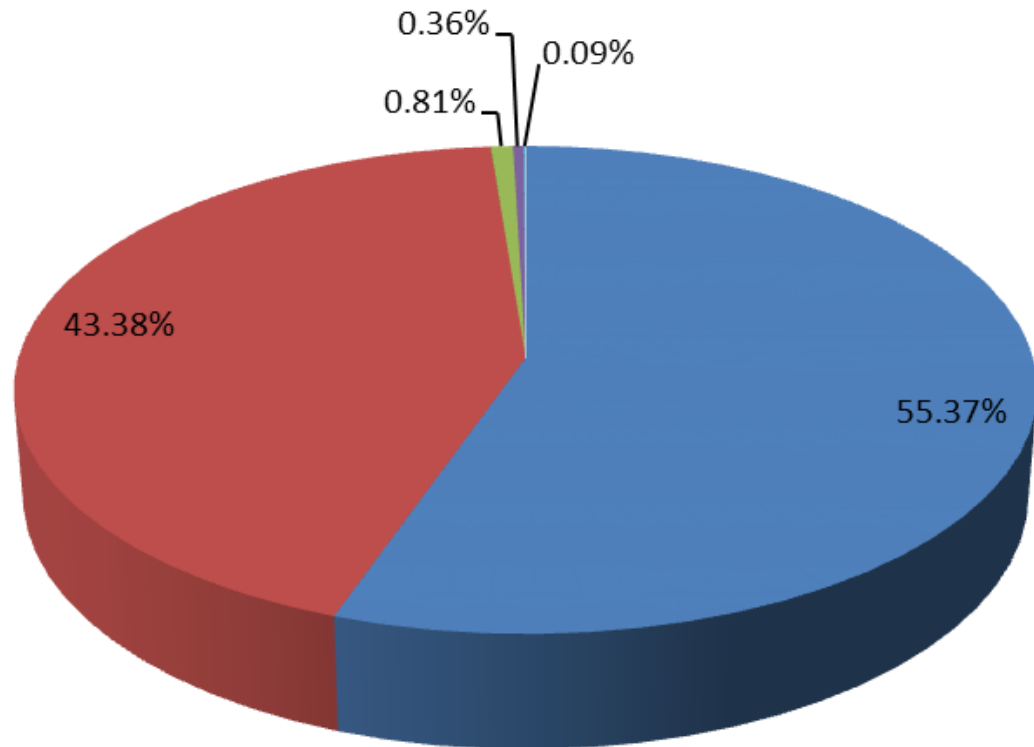
DAVID LANGER

DECEMBER 2012

Fly Ash uses 1,118K Tons - 2011

Use + Tons

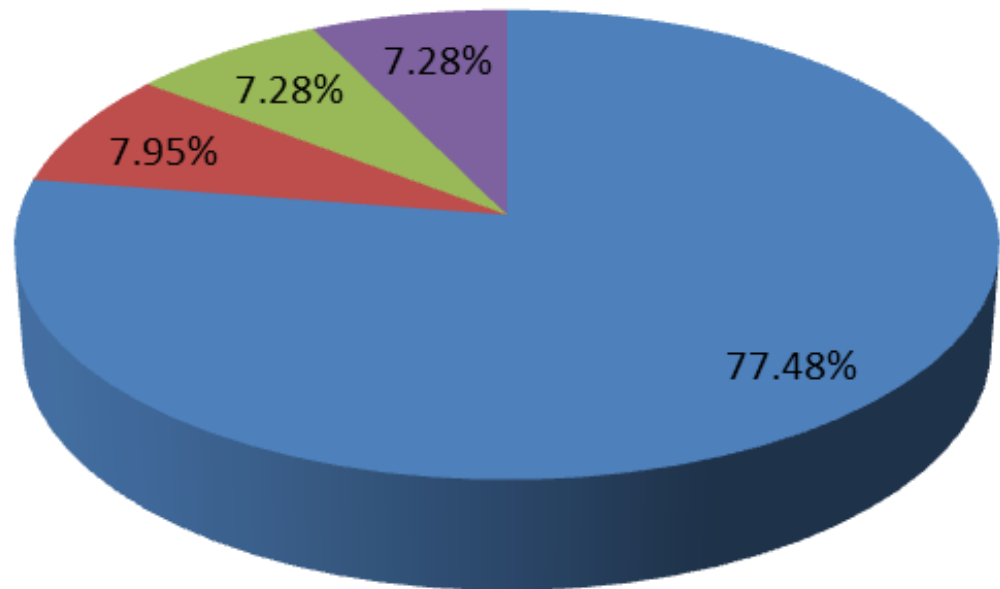
- Cement 619
- Concrete 485
- Costruction elements 9
- Sewage treatment 4
- Asphalt 1



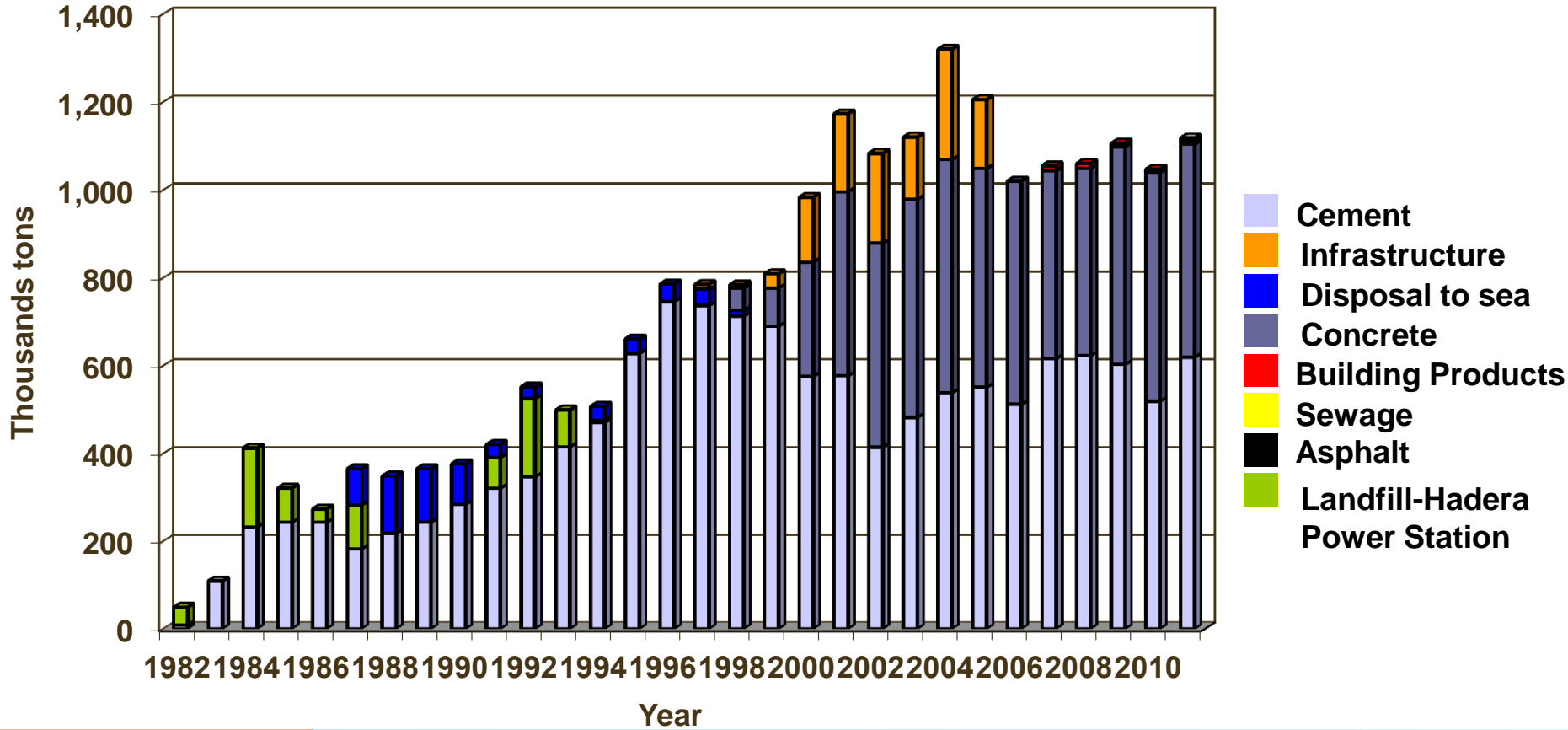
Bottom Ash uses 151K Tons - 2011

Use + Tons

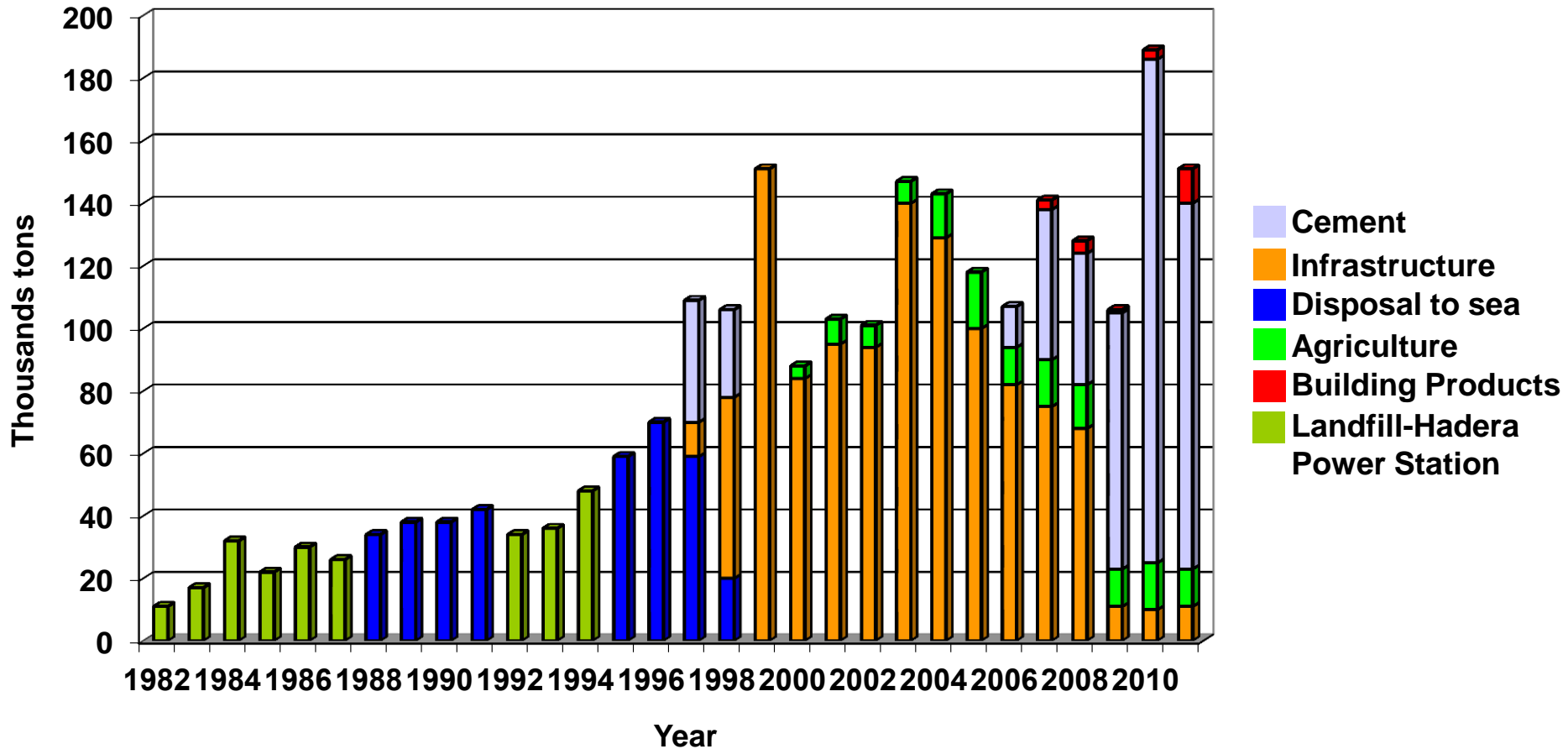
- Cement 117
- Agriculture 12
- Infrastructure 11
- Costruction elements 11




Fly ash uses



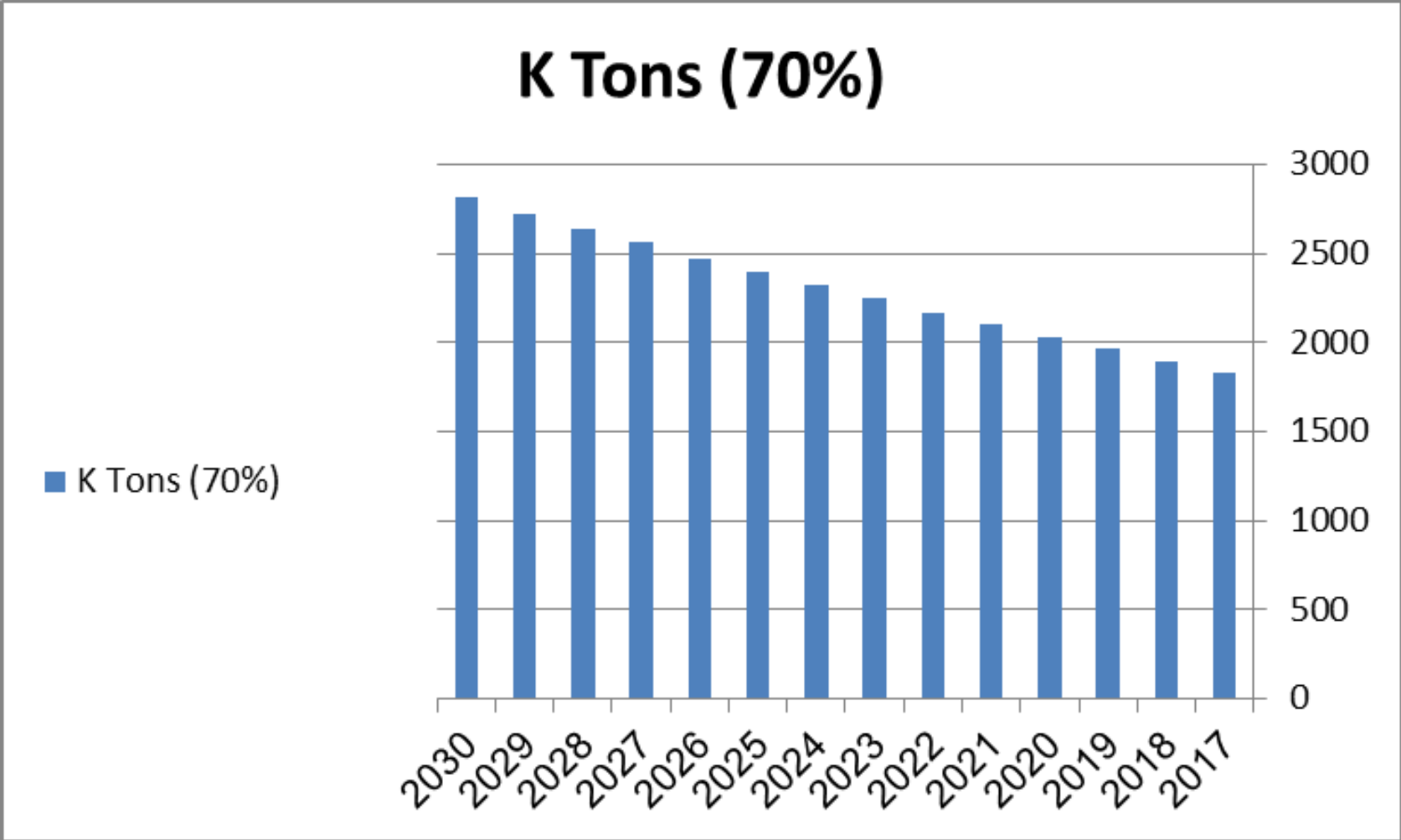
Bottom ash uses



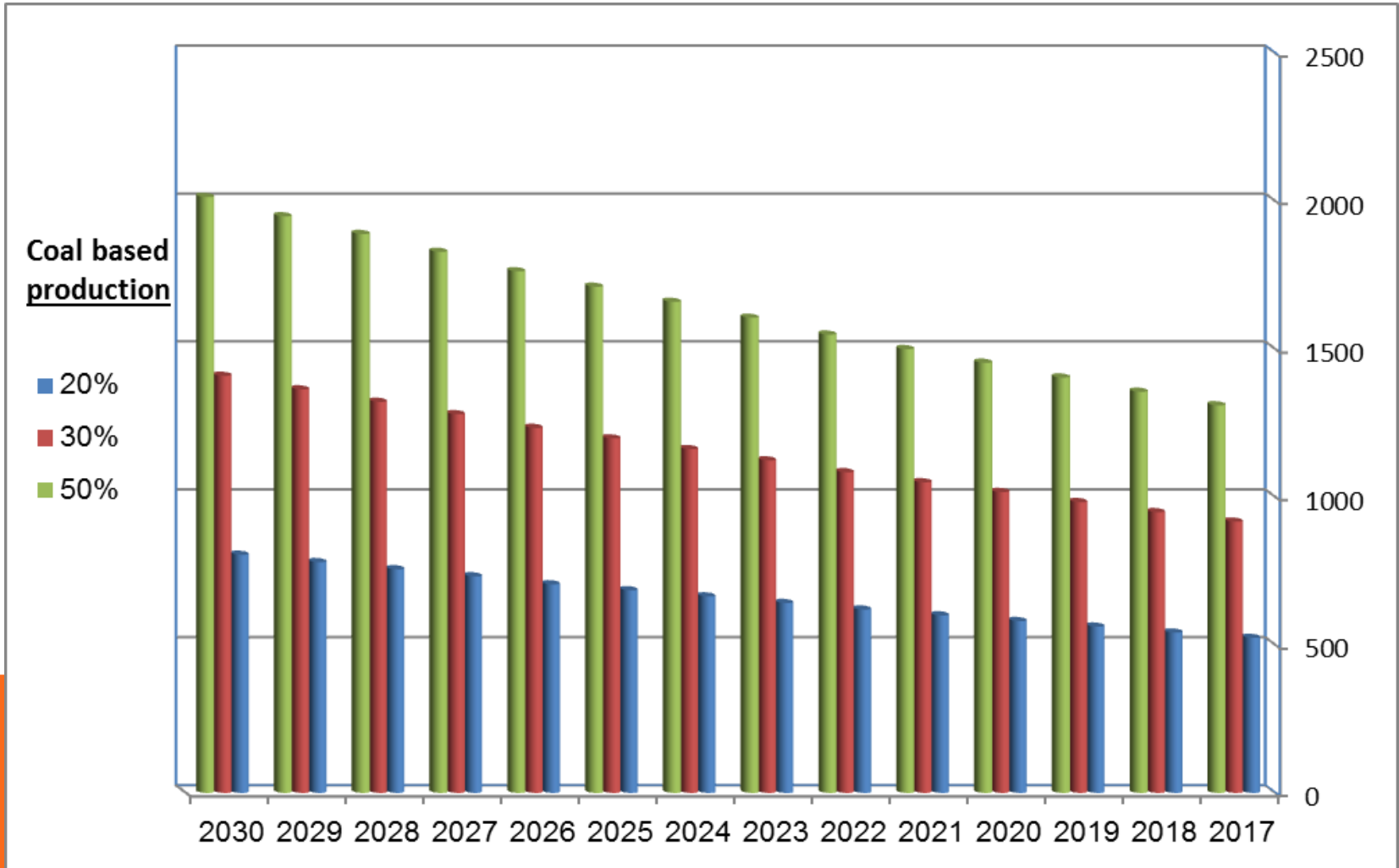
MAIN COAL ASH BOARD OBJECTIVES

- ❖ Ensuring coal ash consecutive clearing from the power stations.
 - ❖ Maximizing economic, technical and environmental benefits, while dealing with the coal ash as a resource.
- 

PREVIOUS MASTER PLAN'S PROJECTED COAL BASED ELECTRICITY PRODUCTION



PROJECTED COAL ASH PRODUCTION (TONS)



DEVELOPMENT POLICY

- ❖ Uses variation
- ❖ Diversified clients
- ❖ Optimal utilization
- ❖ Consecutive demand
- ❖ Maximizing national economy benefits



MASTER'S PLAN GOAL – OPTIMAL UTILIZATION

- ❖ Potential uses characterization
- ❖ Economic evaluation of each use
- ❖ Applications grading



PRELIMINARY TARGET MARKET FORECAST

Application

- Cement
- Concrete
- Concrete products
- Sewage treatment
- Agriculture
- Industrial uses
- building blocks

