

Water Infiltration in Compacted Fly Ash Layer

Rami Keren

Institute of Soil, Water and
Environmental Sciences

Volcani Center,
Agricultural Research
Organization (ARO)











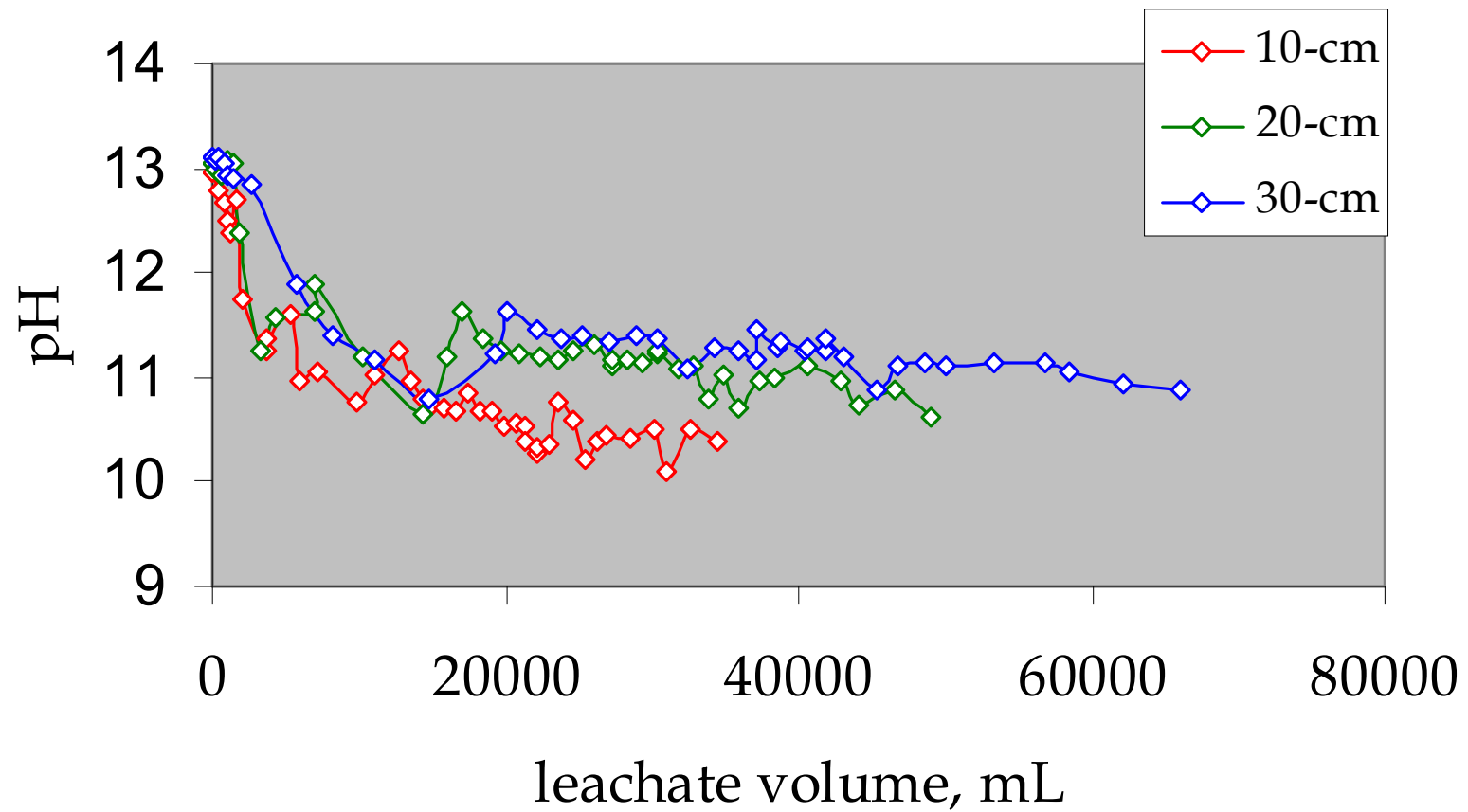


Fly ash in roadbed

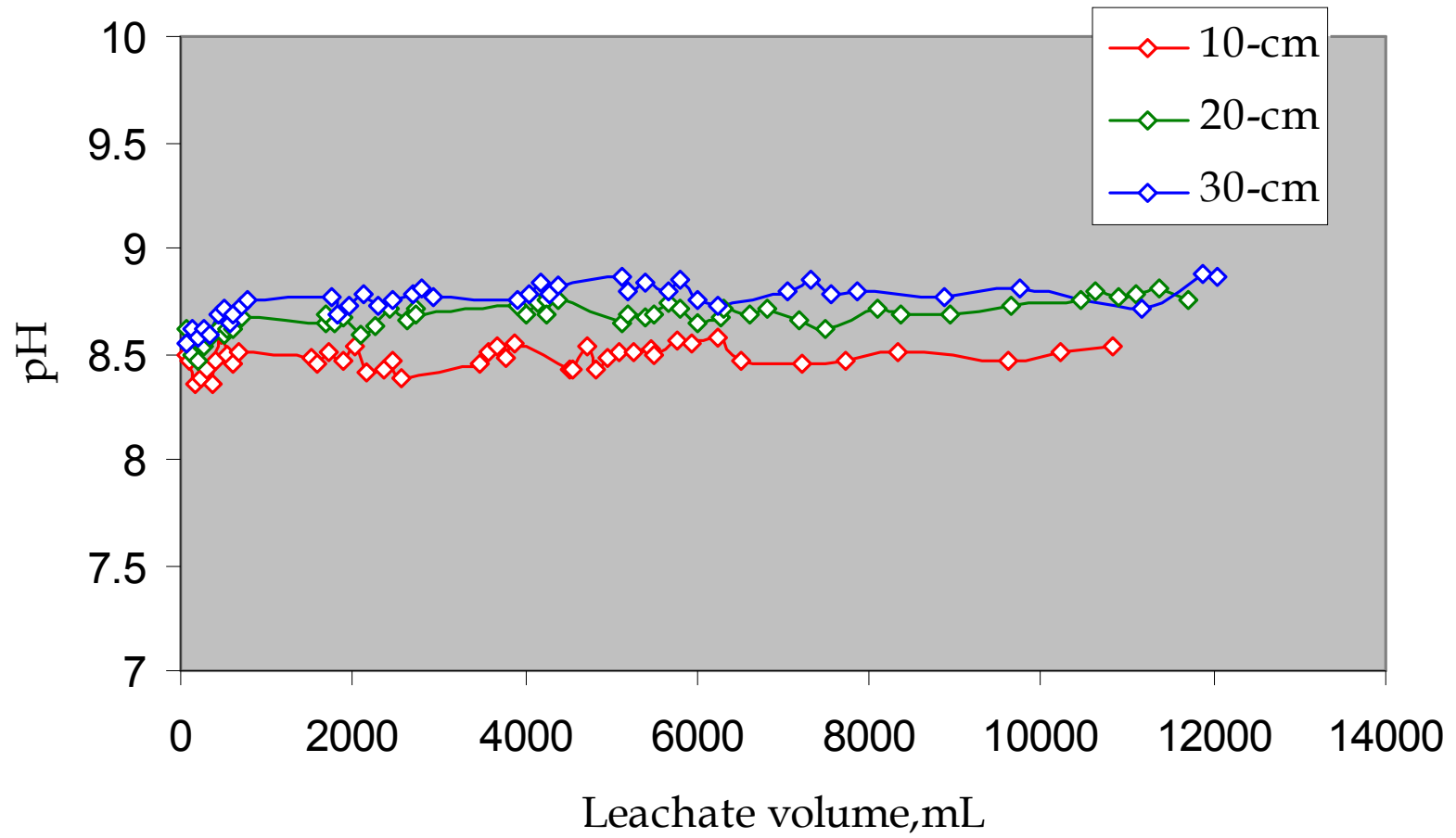
Infiltration rate as a function of time

Year	Infiltration rate mm/h	STDEV
2005	21.6	5.2
2006	11.8	3.6
2007	7.0	2.4
2009	12.5	4.0

pH, t=0 months



pH, t =12 months



THANK YOU

